

**GD Richmond Beaver River I
Solar PV Project – 5.25 MW AC
Richmond, Rhode Island**

POWER SYSTEM AND ARC FLASH HAZARD ANALYSIS REPORT

Rev.1



Durak Ercan

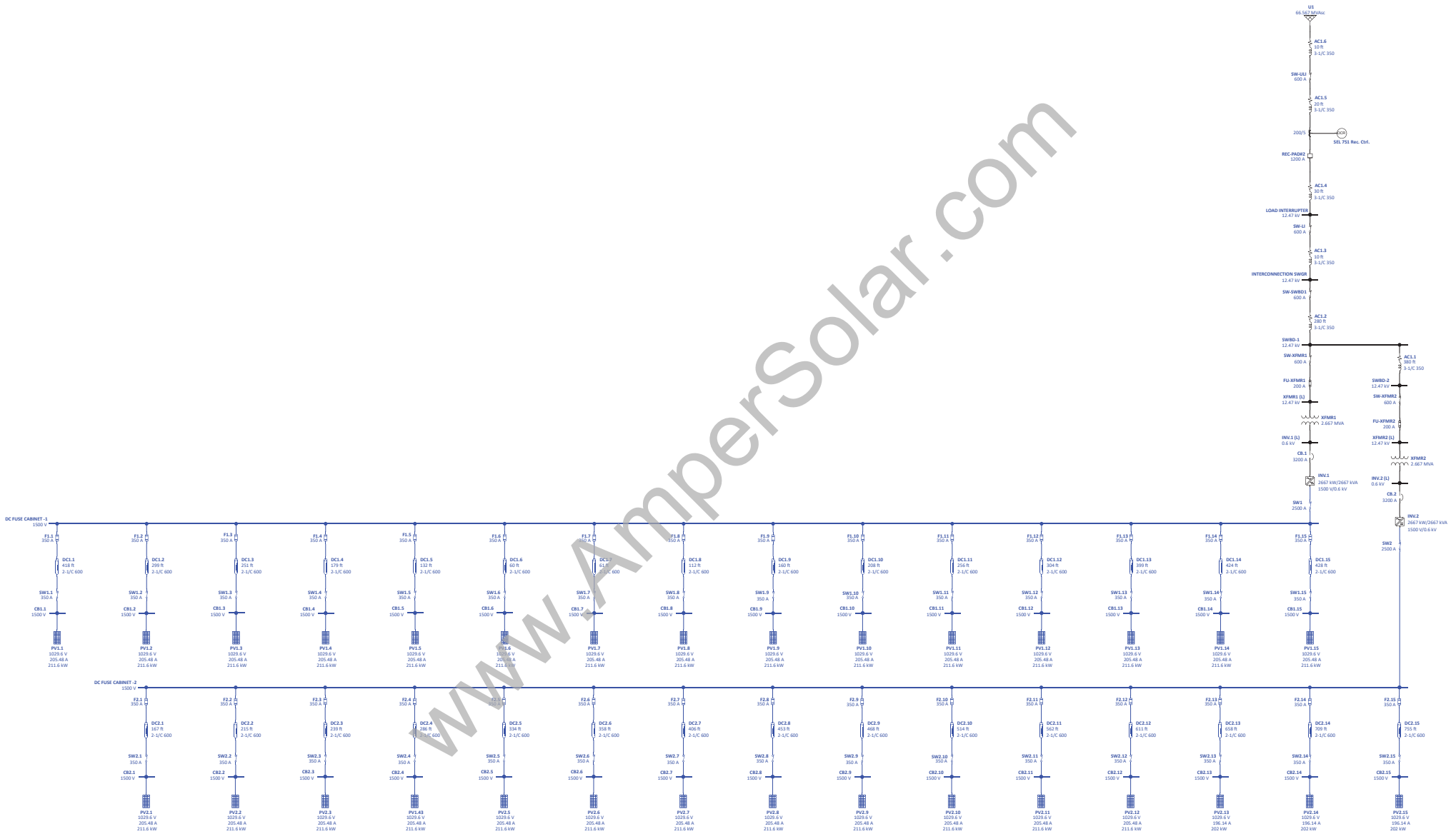
COA # 08796
EXP: 06/30/2025

www.AmperSolar.com

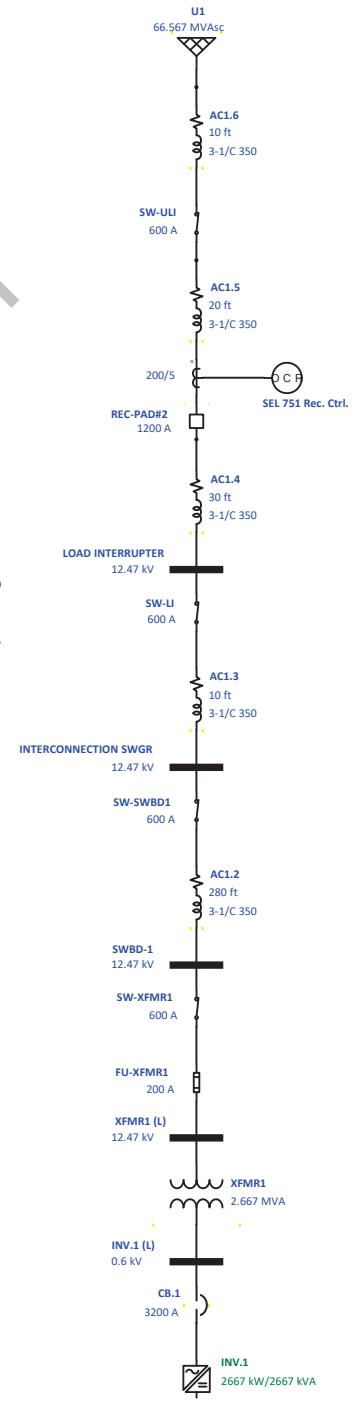
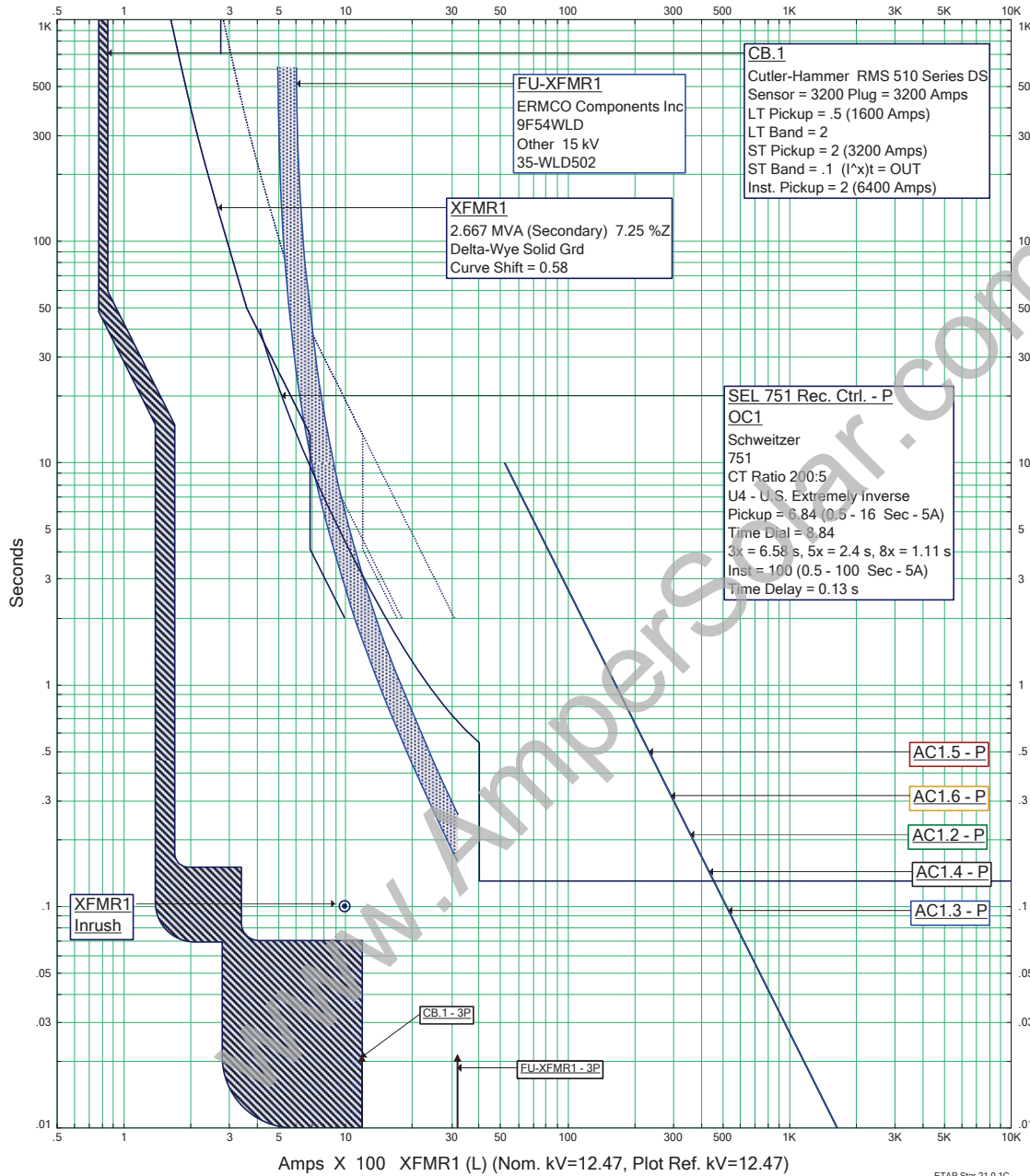
Report Revision Notes		
Rev No.	Issue Date	Description
0	11/27/2023	Issued for Review and Approval.
1	09/04/2024	Issued for Approval – Revised SEL751 CT Ratio

TABLE OF CONTENTS

SECTION 1 - INTRODUCTION	3
1.1 SCOPE AND DESCRIPTION	3
1.2 LIMITATION OF LIABILITY	4
SECTION 2 - SYSTEM MODELING AND INPUT DATA	5
2.1 INPUT DATA COLLECTION	5
2.2 UTILITY COMPANY DATA	5
2.3 STUDY ONE-LINE DIAGRAM	6
2.4 FEEDER INPUT DATA	9
2.5 TRANSFORMER INPUT DATA	13
SECTION 3 - ENGINEERING ANALYSIS	15
3.1 MODES OF OPERATION AND SCENARIOS	15
3.2 ASSUMPTIONS AND CLARIFICATIONS	15
SECTION 4 - SHORT CIRCUIT STUDY	16
4.1 LINE TO LINE DC FAULT CURRENT RESULTS	18
4.2 AC MOMENTARY FAULT CURRENT RESULTS	53
SECTION 5 - EQUIPMENT AND DEVICE EVALUATION STUDY	56
5.1 THREE-PHASE TO GROUND FAULT EQUIPMNET DUTY RESULTS	57
SECTION 6 - PROTECTIVE DEVICE COORDINATION STUDY	60
6.1 TIME-CURRENT COORDINATION CURVES (TCC)	62
6.2 PROTECTIVE DEVICE SETTING SOLID STATE CIRCUIT BREAKERS	65
6.3 PROTECTIVE DECIVE SETTINGS – SOLID STATE RELAYS	67
6.4 PROTECTIVE DEVICE SETTINGS - FUSES	69
SECTION 7 - ARC FLASH HAZARD ANALYSIS	75
7.1 DC ARC FLASH RESULTS	79
7.2 AC ARC FLASH RESULTS	81
7.3 ARC FLASH LABELING PROCEDURES	83
7.4 SAMPLE ARC FLASH LABELS	84
SECTION 8 - RECOMMENDATIONS	85



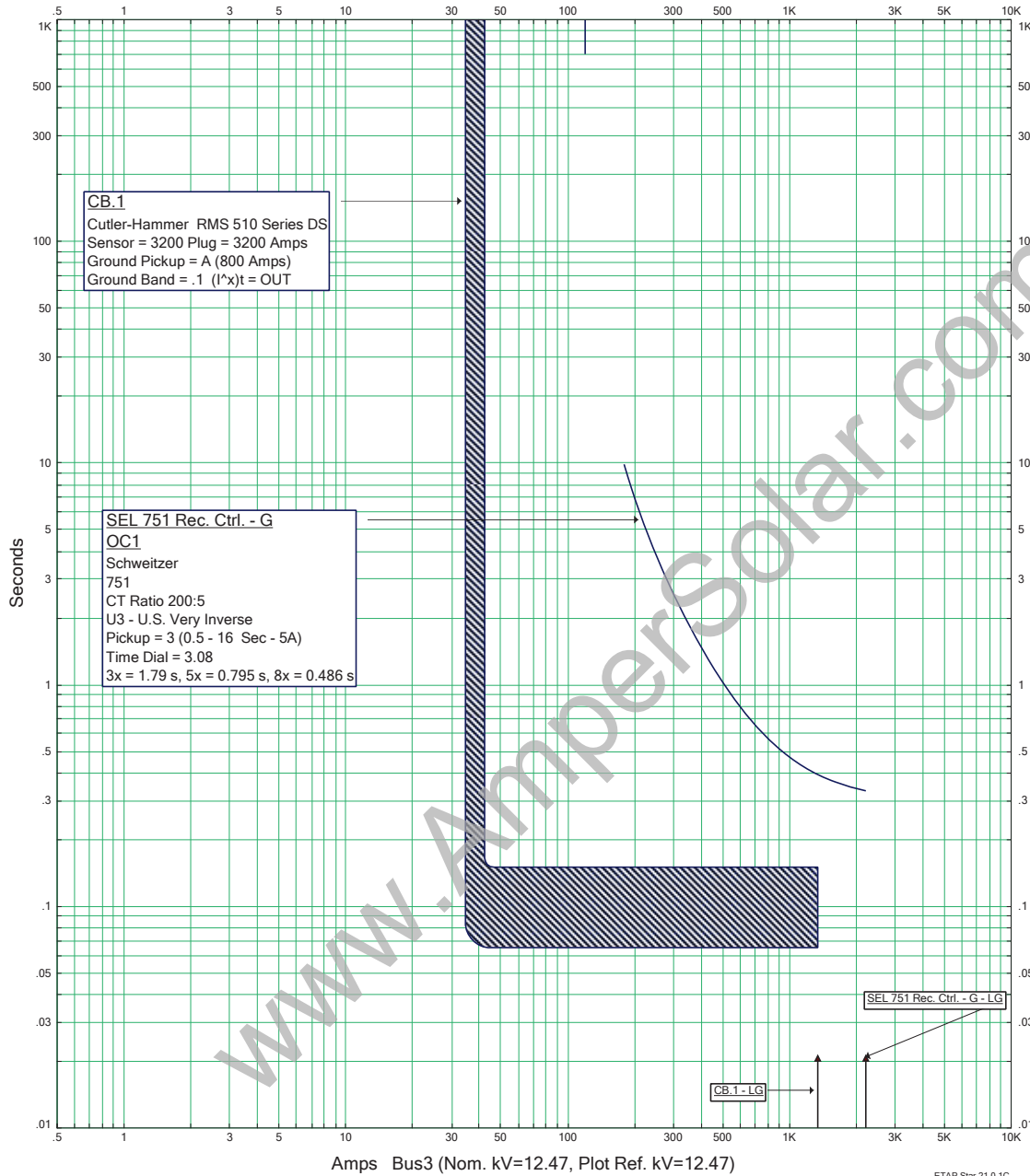
Amps X 100 XFMR1 (L) (Nom. kV=12.47, Plot Ref. kV=12.47)



ETAP Star 21.0.1C

	U_INV1	
Project: GD Richmond Beaver River I Location: Richmond, Rhode Island Contract: 1691-RI Engineer: Durak Evrim Ercan, P.E. Typical for INV.1 and INV.2		Date: 09-04-2024 Rev: Base Fault: Phase

Amps Bus3 (Nom. kV=12.47, Plot Ref. kV=12.47)



Amps Bus3 (Nom. kV=12.47, Plot Ref. kV=12.47)

ETAP Star 21.0.1C

U_INV1	
Project: GD Richmond Beaver River I Location: Richmond, Rhode Island Contract: 1691-RI Engineer: Durak Evrim Ercan, P.E. Typical for INV.1 and INV.2	Date: 09-04-2024 Rev: Base Fault: Ground

