

**Novel Titlow Solar LLC
Solar PV Project – 1.0 MW AC
Sibley County, Minnesota**

POWER SYSTEM AND ARC FLASH HAZARD ANALYSIS REPORT

Rev.0

Certification

I hereby certify that this plan, specification or report was prepared by me or under my direct supervision and that I am a duly licensed professional ENGINEER under the laws of the state of Minnesota.

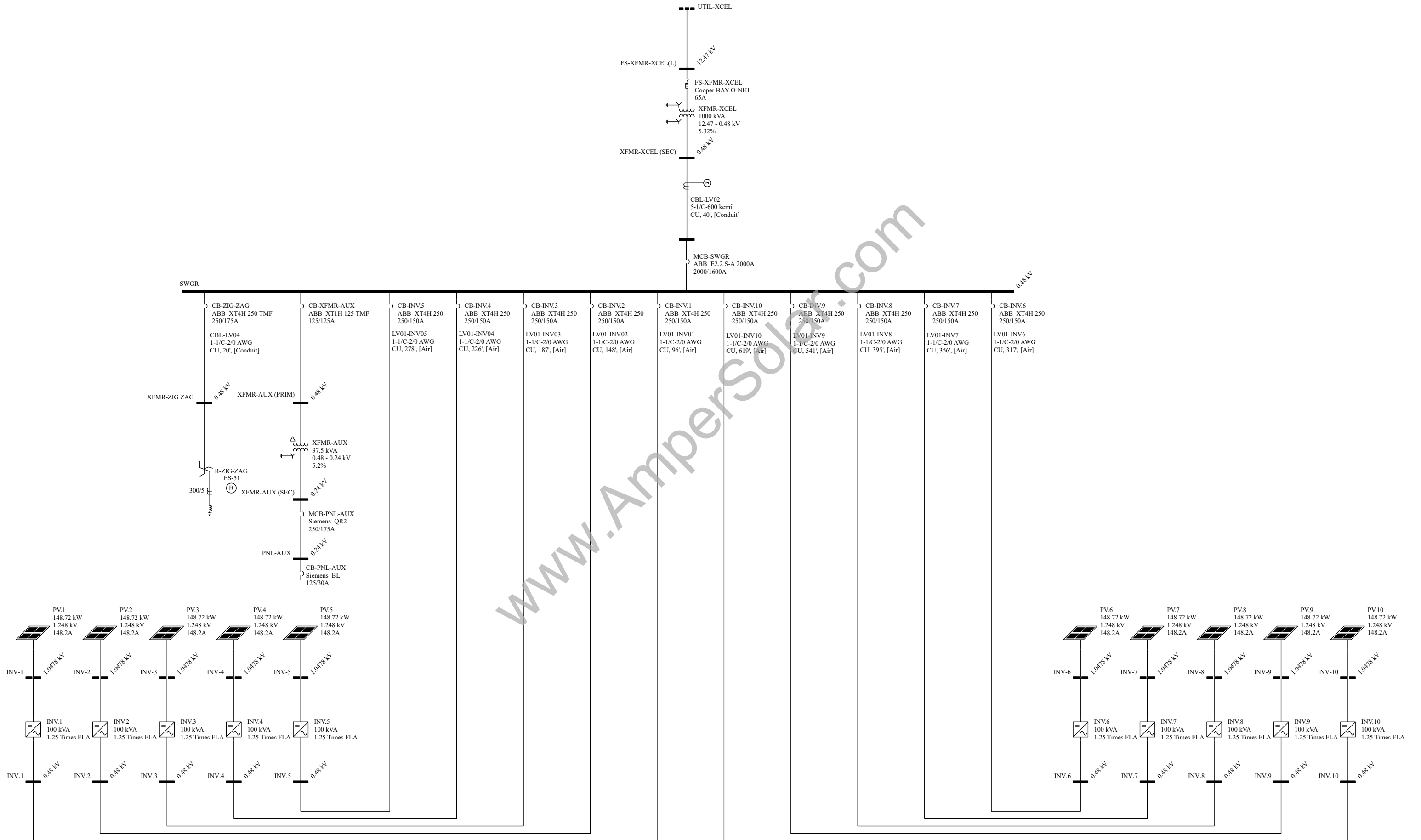


DURAK EVRIM ERCAN, P.E.
Registration No. 57332 Date: 02/11/202

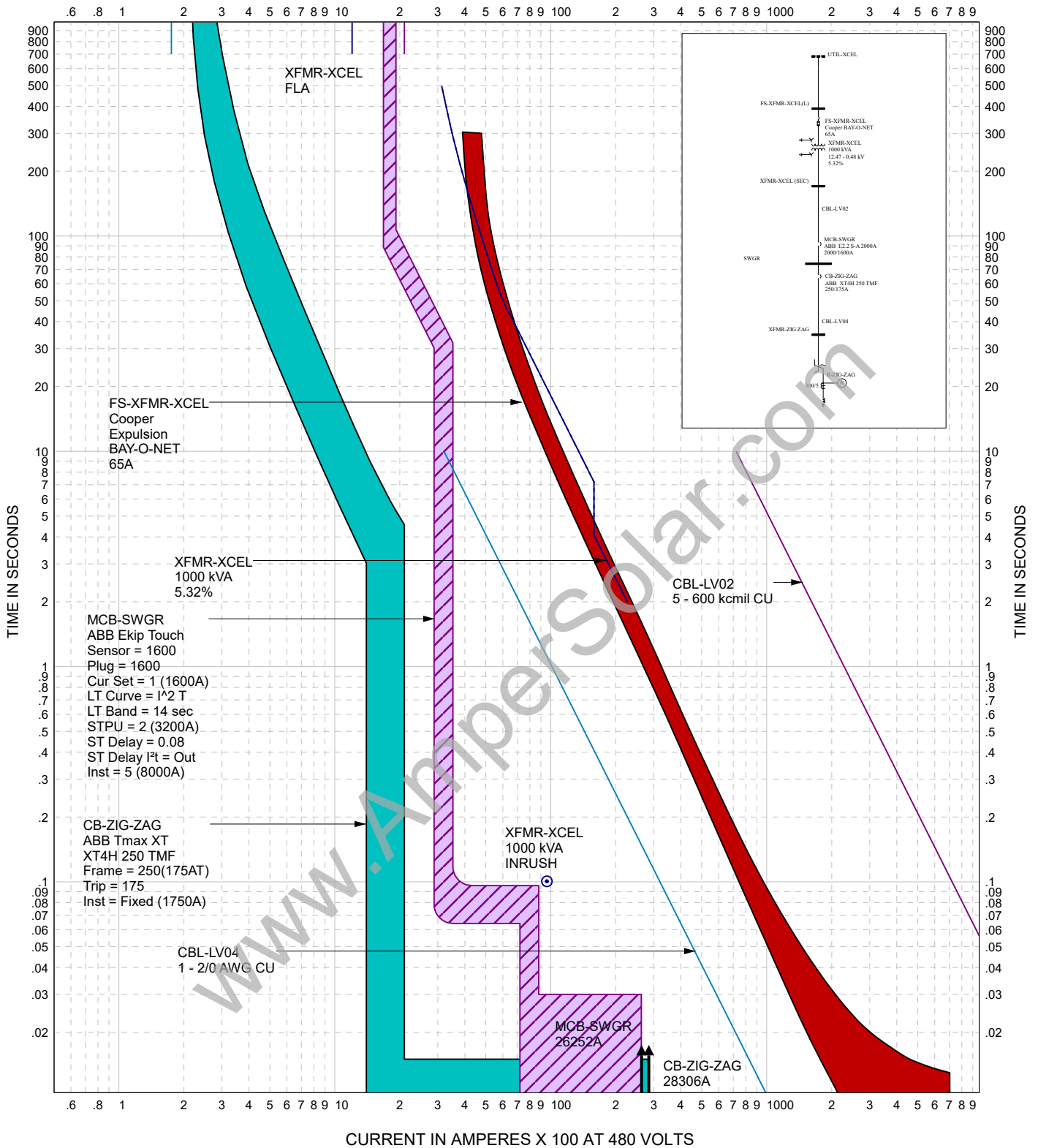
Report Revision Notes		
Rev No.	Issue Date	Description
0	02/06/2022	Issued for Review and Approval.

TABLE OF CONTENTS

SECTION 1 - INTRODUCTION.....	3
1.1 SCOPE AND DESCRIPTION.....	3
1.2 LIMITATION OF LIABILITY.....	4
SECTION 2 - SYSTEM MODELING AND INPUT DATA	5
2.1 INPUT DATA COLLECTION.....	5
2.2 UTILITY COMPANY DATA.....	5
2.3 STUDY ONE-LINE DIAGRAM	6
2.4 FEEDER INPUT DATA.....	9
2.5 TRANSFORMER INPUT DATA	10
SECTION 3 - ENGINEERING ANALYSIS.....	11
3.1 MODES OF OPERATION AND SCENARIOS	11
3.2 ASSUMPTIONS AND CLARIFICATIONS.....	11
SECTION 4 - SHORT CIRCUIT STUDY.....	12
4.1 LINE TO LINE DC MOMENTARY FAULT CURRENT RESULTS.....	15
4.2 THREE-PHASE AC MOMENTARY FAULT CURRENT RESULTS	16
4.3 LINE TO LINE DC INTERRUPTING FAULT CURRENT RESULTS	18
4.4 THREE-PHASE AC INTERRUPTING FAULT CURRENT RESULTS	19
4.5 LINE TO GROUND DC MOMENTARY FAULT CURRENT RESULT.....	20
4.6 SINGLE-LINE TO GROUND AC MOMENTARY FAULT CURRENT RESULT	21
4.7 LINE TO GROUND DC INTERRUPTING FAULT CURRENT RESULTS	23
4.8 SINGLE-LINE TO GROUND AC INTERRUPTING FAULT CURRENT RESULTS.....	24
SECTION 5 - EQUIPMENT AND DEVICE EVALUATION STUDY	25
5.1 THREE-PHASE TO GROUND FAULT EQUIPMNET DUTY RESULTS	26
5.2 SINGLE-LINE TO GROUND FAULT EQUIPMENT DUTY RESULTS	27
SECTION 6 - PROTECTIVE DEVICE COORDINATION STUDY	28
6.1 TIME-CURRENT COORDINATION CURVES (TCC).....	30
6.2 PROTECTIVE DEVICE SETTING SOLID STATE CIRCUIT BREAKERS.....	34
6.3 PROTECTIVE DEVICE SETTINGS – THERMAL MAGNETIC CIRCUIT BREAKERS.....	35
6.4 PROTECTIVE DECIVE SETTINGS – SOLID STATE RELAYS	36
6.5 PROTECTIVE DEVICE SETTINGS - FUSES	37
SECTION 7 - ARC FLASH HAZARD ANALYSIS	38
7.1 DC ARC FLASH RESULTS	43
7.2 AC ARC FLASH RESULTS	44
7.3 ARC FLASH LABELING PROCEDURES.....	45
7.4 SAMPLE ARC FLASH LABELS	46
SECTION 8 - RECOMMENDATIONS.....	47



CURRENT IN AMPERES X 100 AT 480 VOLTS



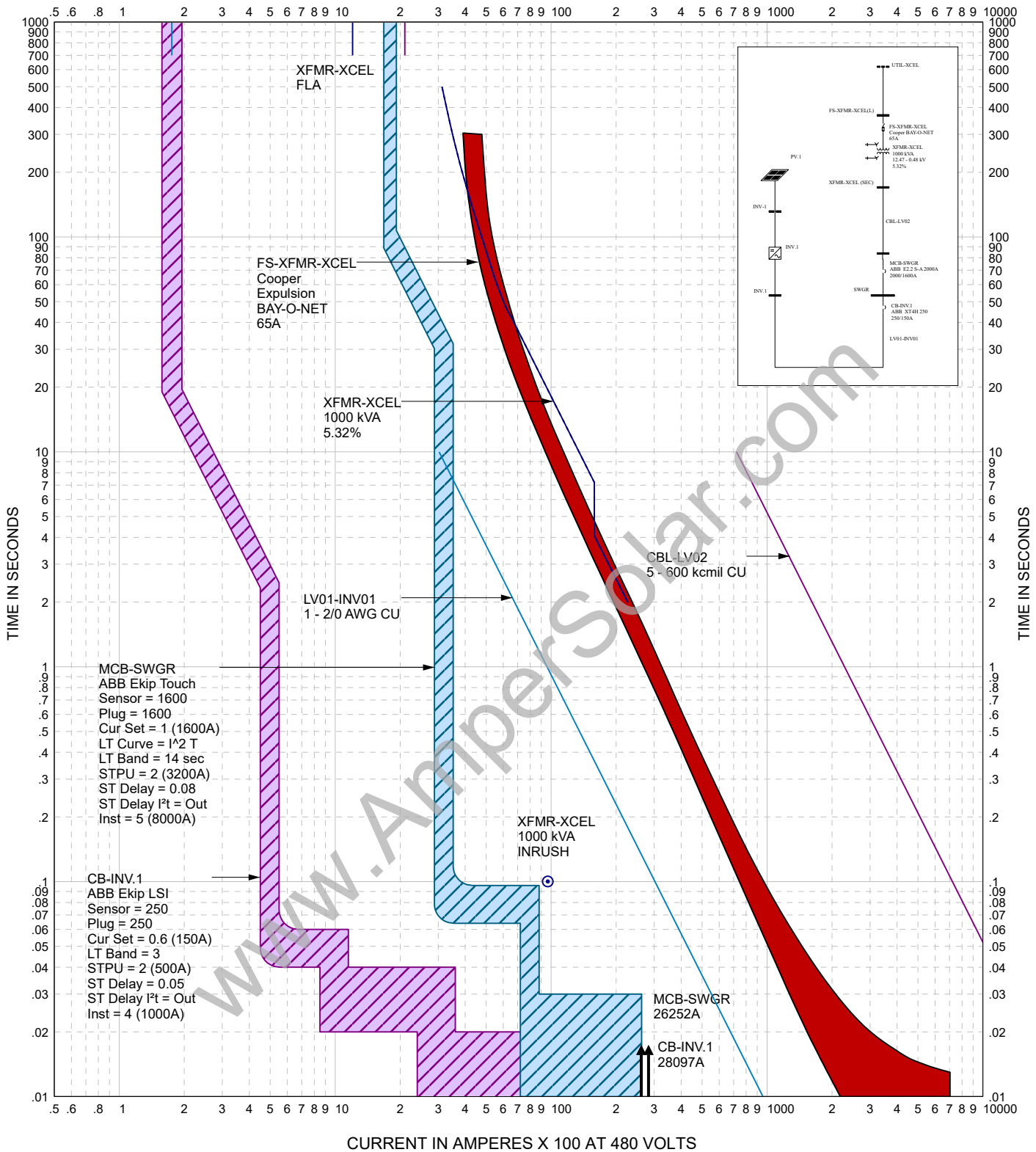
EasyPower®
TIME-CURRENT CURVES

TCC-1

Recommended settings show best possible coordination

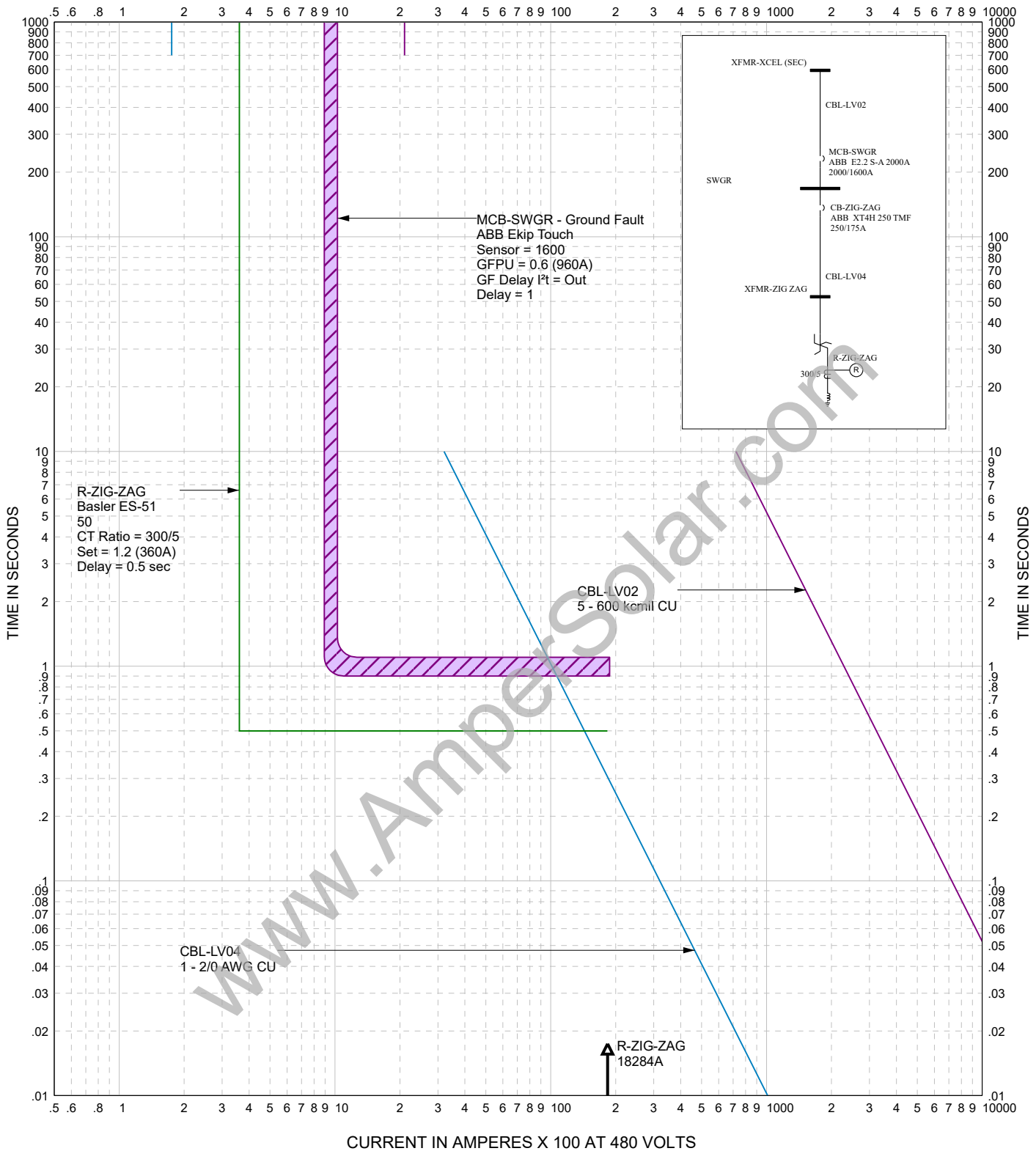
FAULT: 3 Phase
DATE: 02/06/2022
BY: D. Evrim Ercan, P.E.
REVISION: 0

CURRENT IN AMPERES X 100 AT 480 VOLTS



<p>Worley Group, Inc.</p>	<p>EasyPower® TIME-CURRENT CURVES</p>	<p>TCC-2</p>
<p>Recommended settings show best possible coordination</p>		<p>FAULT: 3 Phase DATE: 02/06/2022 BY: D. Evrim Ercan, P.E. REVISION: 0</p>

CURRENT IN AMPERES X 100 AT 480 VOLTS



EasyPower[®]
TIME-CURRENT CURVES

TCC-3

Recommended settings show best possible coordination

FAULT: SLG
DATE: 02/06/2022
BY: D. Evrim Ercan, P.E.
REVISION: 0