

TIOGA WALSH - ENDICOTT, NEW YORK



SCOPE OF WORK SUMMARY:

THE PROPOSED PROJECT IS A GROUND MOUNTED SOLAR PROJECT WITH SINGLE AXIS TRACKER SYSTEM. THE PV SYSTEM WILL BE INTERCONNECTED WITH NYSEG & RG&E'S DISTRIBUTION LINE AT 12.47KV GRID VOLTAGE.

UTILITY:

NYSEG & ROCHESTER GAS AND ELECTRIC (RG&E)

APPLICABLE CODE:

NEW YORK STATE ELECTRICAL CODE 2017
FIRE CODE NYS 2020

SYSTEM SUMMARY:

SOLAR GROUND MOUNT SYSTEM	
DC SYSTEM SIZE	5.434 MW
AC SYSTEM SIZE	3.625 MW
MODULE DETAILS	
MODULE MANUFACTURER	TRINA
MODULE MODEL & QUANTITY	TSM-DEG20C.20 590W(9210)
MODULE PER STRING	30
MOUNTING SYSTEM	SINGLE AXIS TRACKER
MODULE AZIMUTH	90° TO 270°
INVERTER DETAILS	
INVERTER MANUFACTURER	SMA
INVERTER MODEL	(29) SUNNY HIGHPOWER PEAK3 125-US
BESS DETAILS	
BESS MANUFACTURER	TESLA MEGAPACK 2XL 1927.2KW/3854.4KWH

SHEET INDEX:

T-1.0	TITLE SHEET
E-1.0	SITE PLAN
E-2.0	SINGLE LINE DIAGRAM
E-3.0	THREE LINE DIAGRAM

PROJECT NAME AND ADDRESS

TIOGA WALSH

SYSTEM SUMMARY

DC SYSTEM SIZE:5.434 MW
AC SYSTEM SIZE:3.625 MW
MODULE TYPE:TRINA SOLAR 590W
MODULE QUANTITY:9210
INVERTER TYPE:(29) SUNNY
HIGHPOWER PEAK3 125-US
BESS SYSTEM:TESLA MEGAPACK 2XL
1927.2KW/3854.4KWH

DATE	DESCRIPTION	REV
05/20/24	ISSUED FOR INTERCONNECTION	0
07/01/24	UTILITY CHANGES	1
08/21/24	CUSTOMER CHANGES	2

DEVELOPER

PROFESSIONAL ENGINEER



ISSUED FOR INTERCONNECTION APPLICATION,
NOT FOR CONSTRUCTION

P. E. SIGN & SEAL



AMPER JOB

1917-NY

PROJECT COORDINATOR

SHEET NAME

TITLE SHEET

SHEET NUMBER

T-1.0

WARNING: IT IS A VIOLATION OF THE NYS EDUCATION LAW ARTICLE 145 FOR ANY PERSON, UNLESS HE IS ACTING UNDER THE DIRECTION OF A LICENSED PROFESSIONAL ENGINEER, TO ALTER THIS ITEM IN ANY WAY.



1 SITE PLAN
E-1.0 SCALE: 1"=250'

SUMMARY	
TOTAL ARRAY SIZE (MW DC)	5.434 MW
TOTAL SYSTEM SIZE (MW AC)	3.625 MW
TOTAL NUMBER OF MODULES IN ARRAY	9210
NUMBER OF STRINGS	307
NUMBER OF MODULES PER STRING	30
MODULE MODEL	TRINA TSM-DEG20C.20 590W
MODULE WATTAGE (W)	590
GROUND COVERAGE RATIO (%)	32.39
SOLAR AZIMUTH (°)	90 TO 270
MOUNTING SYSTEM	SINGLE AXIS TRACKER
INVERTER MODEL	(29) SUNNY HIGHPOWER PEAK3 125-US
ENERGY STORAGE SYSTEM	TESLA MEGAPACK 2XL 1927.2KW/3854.4KWH

- LAYOUT AND EQUIPMENT SUBJECT TO SITE EVALUATION
- PARCEL ACREAGE: 57.52 ACRES | ARRAY ACREAGE: 20.85 ACRES
- WETLAND OFFSET = 100', STREAM OFFSET = 100', PROPERTY OFFSET = 50', BUILDING OFFSET = 200'

PROJECT NAME AND ADDRESS
TIOGA WALSH

SYSTEM SUMMARY
DC SYSTEM SIZE: 5.434 MW
AC SYSTEM SIZE: 3.625 MW
MODULE TYPE: TRINA SOLAR 590W
MODULE QUANTITY: 9210
INVERTER TYPE: (29) SUNNY HIGHPOWER PEAK3 125-US
BESS SYSTEM: TESLA MEGAPACK 2XL 1927.2KW/3854.4KWH

DATE	DESCRIPTION	REV
05/20/24	ISSUED FOR INTERCONNECTION	0
07/01/24	UTILITY CHANGES	1
08/21/24	CUSTOMER CHANGES	2

DEVELOPER

PROFESSIONAL ENGINEER

DURAK EVRIM ERCAN P.E.
ENGINEERING CONSULTING ESTIMATING
201-920-2899 info@AmperEngineering.com

ISSUED FOR INTERCONNECTION APPLICATION, NOT FOR CONSTRUCTION

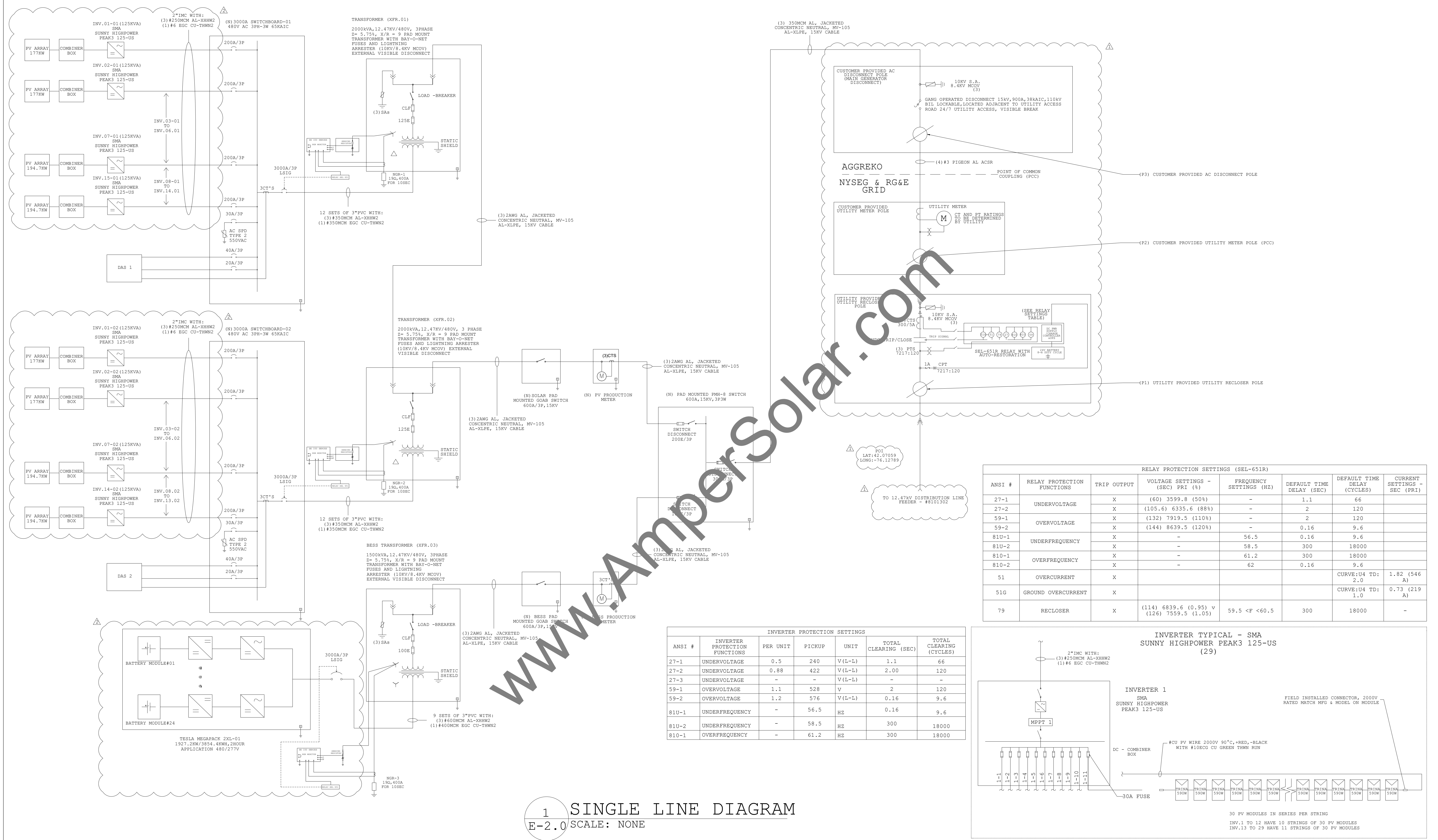
P.E. SIGN & SEAL

AMPER JOB
1917-NY

PROJECT COORDINATOR

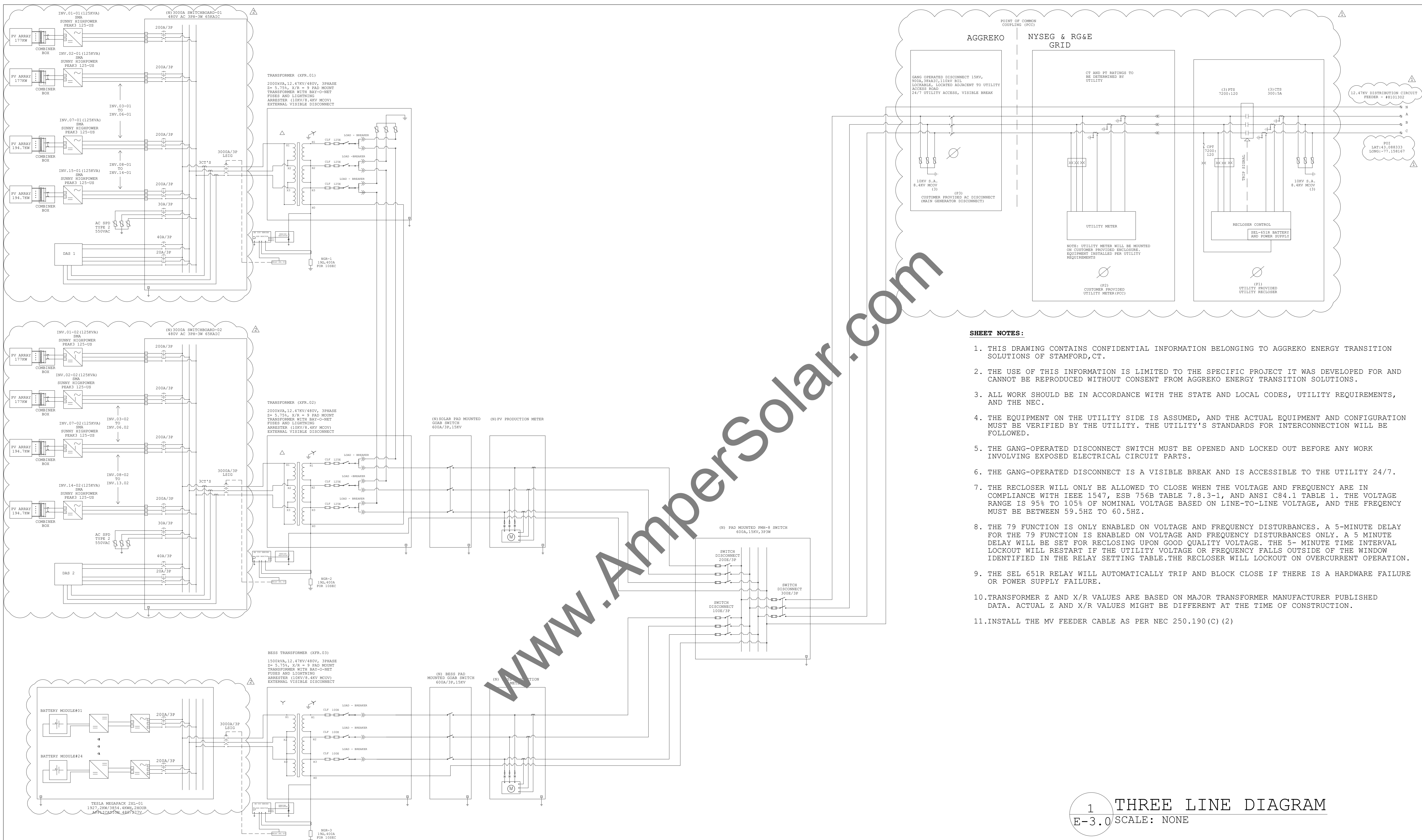
SHEET NAME
SITE PLAN
SHEET NUMBER
E-1.0

WARNING: IT IS A VIOLATION OF THE NYS EDUCATION LAW ARTICLE 145 FOR ANY PERSON, UNLESS HE IS ACTING UNDER THE DIRECTION OF A LICENSED PROFESSIONAL ENGINEER, TO ALTER THIS ITEM IN ANY WAY.



1 SINGLE LINE DIAGRAM
 E-2.0 SCALE: NONE

PROJECT NAME AND ADDRESS TIOGA WALSH	SYSTEM SUMMARY DC SYSTEM SIZE:5.434 MW AC SYSTEM SIZE:3.625 MW MODULE TYPE:TRINA SOLAR 590W MODULE QUANTITY:9210 INVERTER TYPE:(29) SUNNY HIGHPOWER PEAK3 125-US BESS SYSTEM:TESLA MEGAPACK 2XL 1927.2KW/3854.4KWH	<table border="1"> <thead> <tr> <th>DATE</th> <th>DESCRIPTION</th> <th>REV</th> </tr> </thead> <tbody> <tr> <td>05/20/24</td> <td>ISSUED FOR INTERCONNECTION</td> <td>0</td> </tr> <tr> <td>07/01/24</td> <td>UTILITY CHANGES</td> <td>1</td> </tr> <tr> <td>08/21/24</td> <td>CUSTOMER CHANGES</td> <td>2</td> </tr> </tbody> </table>	DATE	DESCRIPTION	REV	05/20/24	ISSUED FOR INTERCONNECTION	0	07/01/24	UTILITY CHANGES	1	08/21/24	CUSTOMER CHANGES	2	DEVELOPER PROFESSIONAL ENGINEER DURAK EVRIM ERCAN P.E. ENGINEERING CONSULTING ESTIMATING 201-920-2899 info@AmperEngineering.com	ISSUED FOR INTERCONNECTION APPLICATION, NOT FOR CONSTRUCTION	AMPER JOB 1917-NY	PROJECT COORDINATOR WARNING: IT IS A VIOLATION OF THE NYS EDUCATION LAW ARTICLE 145 FOR ANY PERSON, UNLESS HE IS ACTING UNDER THE DIRECTION OF A LICENSED PROFESSIONAL ENGINEER, TO ALTER THIS ITEM IN ANY WAY.	SHEET NAME SINGLE LINE DIAGRAM SHEET NUMBER E-2.0
DATE	DESCRIPTION	REV																	
05/20/24	ISSUED FOR INTERCONNECTION	0																	
07/01/24	UTILITY CHANGES	1																	
08/21/24	CUSTOMER CHANGES	2																	



- SHEET NOTES:**
1. THIS DRAWING CONTAINS CONFIDENTIAL INFORMATION BELONGING TO AGGREGO ENERGY TRANSITION SOLUTIONS OF STAMFORD, CT.
 2. THE USE OF THIS INFORMATION IS LIMITED TO THE SPECIFIC PROJECT IT WAS DEVELOPED FOR AND CANNOT BE REPRODUCED WITHOUT CONSENT FROM AGGREGO ENERGY TRANSITION SOLUTIONS.
 3. ALL WORK SHOULD BE IN ACCORDANCE WITH THE STATE AND LOCAL CODES, UTILITY REQUIREMENTS, AND THE NEC.
 4. THE EQUIPMENT ON THE UTILITY SIDE IS ASSUMED, AND THE ACTUAL EQUIPMENT AND CONFIGURATION MUST BE VERIFIED BY THE UTILITY. THE UTILITY'S STANDARDS FOR INTERCONNECTION WILL BE FOLLOWED.
 5. THE GANG-OPERATED DISCONNECT SWITCH MUST BE OPENED AND LOCKED OUT BEFORE ANY WORK INVOLVING EXPOSED ELECTRICAL CIRCUIT PARTS.
 6. THE GANG-OPERATED DISCONNECT IS A VISIBLE BREAK AND IS ACCESSIBLE TO THE UTILITY 24/7.
 7. THE RECLOSER WILL ONLY BE ALLOWED TO CLOSE WHEN THE VOLTAGE AND FREQUENCY ARE IN COMPLIANCE WITH IEEE 1547, ESB 756B TABLE 7.8.3-1, AND ANSI C84.1 TABLE 1. THE VOLTAGE RANGE IS 95% TO 105% OF NOMINAL VOLTAGE BASED ON LINE-TO-LINE VOLTAGE, AND THE FREQUENCY MUST BE BETWEEN 59.5HZ TO 60.5HZ.
 8. THE 79 FUNCTION IS ONLY ENABLED ON VOLTAGE AND FREQUENCY DISTURBANCES. A 5-MINUTE DELAY FOR THE 79 FUNCTION IS ENABLED ON VOLTAGE AND FREQUENCY DISTURBANCES ONLY. A 5 MINUTE DELAY WILL BE SET FOR RECLOSING UPON GOOD QUALITY VOLTAGE. THE 5- MINUTE TIME INTERVAL LOCKOUT WILL RESTART IF THE UTILITY VOLTAGE OR FREQUENCY FALLS OUTSIDE OF THE WINDOW IDENTIFIED IN THE RELAY SETTING TABLE. THE RECLOSER WILL LOCKOUT ON OVERCURRENT OPERATION.
 9. THE SEL 651R RELAY WILL AUTOMATICALLY TRIP AND BLOCK CLOSE IF THERE IS A HARDWARE FAILURE OR POWER SUPPLY FAILURE.
 10. TRANSFORMER Z AND X/R VALUES ARE BASED ON MAJOR TRANSFORMER MANUFACTURER PUBLISHED DATA. ACTUAL Z AND X/R VALUES MIGHT BE DIFFERENT AT THE TIME OF CONSTRUCTION.
 11. INSTALL THE MV FEEDER CABLE AS PER NEC 250.190 (C) (2)

1 THREE LINE DIAGRAM
 E-3.0 SCALE: NONE

PROJECT NAME AND ADDRESS
 TIOGA WALSH

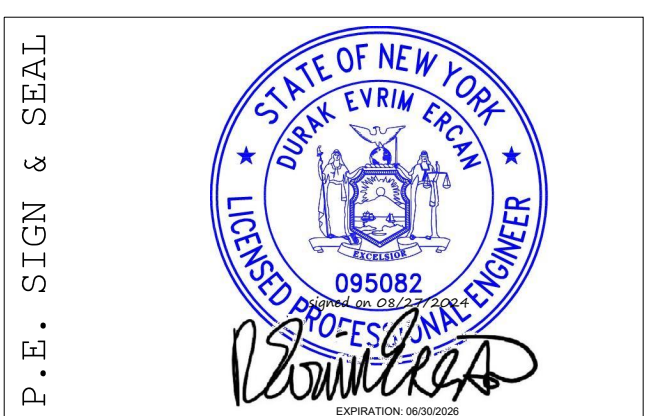
SYSTEM SUMMARY
 DC SYSTEM SIZE: 5.434 MW
 AC SYSTEM SIZE: 3.625 MW
 MODULE TYPE: TRINA SOLAR 590W
 MODULE QUANTITY: 9210
 INVERTER TYPE: (29) SUNNY HIGHPOWER PEAK3 125-US
 BESS SYSTEM: TESLA MEGAPACK 2XL 1927.2KW/3854.4KWH

DATE	DESCRIPTION	REV
05/20/24	ISSUED FOR INTERCONNECTION	0
07/01/24	UTILITY CHANGES	1
08/21/24	CUSTOMER CHANGES	2

DEVELOPER

PROFESSIONAL ENGINEER
DURAK EVRIM ERCAN P.E.
 ENGINEERING CONSULTING ESTIMATING
 201-920-2899 info@AmperEngineering.com

ISSUED FOR INTERCONNECTION APPLICATION, NOT FOR CONSTRUCTION



AMPER JOB
 1917-NY

WARNING: IT IS A VIOLATION OF THE NYS EDUCATION LAW ARTICLE 145 FOR ANY PERSON, UNLESS HE IS ACTING UNDER THE DIRECTION OF A LICENSED PROFESSIONAL ENGINEER, TO ALTER THIS ITEM IN ANY WAY.

PROJECT COORDINATOR

SHEET NAME
 THREE LINE DIAGRAM

SHEET NUMBER
 E-3.0